

What are the benefits of WhitemileClear?

WhitemileClear®ALIGNER

has been developed especially as a discreet and virtually invisible appliance for patients with unique staging properties. Multidirectional, efficient and effective tooth movement provided with a Tristar material for complex movements as well for space closure.

Maximum Velocity, Minimum stages. The advantage on your side: Traditionally, clear aligner therapy presented with any weaknesses including failure to track in the vertical dimension.

Our new protocols and attachments extend the range of clear aligner treatments, giving both doctors and patients the confidence to approach challenging malocclusions.

How do clear aligner work:

Each of the WhitemileClear® aligners is perfectly designed to fit over the teeth. Over time, the aligner gradually moves all of the teeth right into their appropriate place, so that the teeth produce a perfect smile. The patient must wear our aligners for ten days, 22 hours per day before advancing sequentially to new sets of aligners.

The step-by-step process of wearing the aligner helps to reposition the teeth with proper force until the alignment of the teeth is complete. A step by step methodology makes sure that the patients are following the proper orthodontic plan laid out by the dentist. WhitemileClear® ALIGNER provides a clear solution that helps to minimize any discomfort the patient may have while wearing the aligner.

When it comes to learning about WhitemileClear ALIGNER, we have a convenient e-learning platform for dentists to use. Visit <https://whitemileclear.com/courses/smile-coach/> to learn more about our product.



WhitemileClear

**"WhitemileClear,
you are the reason
someone smiles today"**

Consider WhitemileClear® today!



WhitemileClear
No.127, 3rd Floor, Jalan Imbi,
55100, Kuala Lumpur, Malaysia
Web: whitemileclear.com

Phone +60-18-6647433
Email info@whitemileclear.com
Sales Rep: Bob +6016-3423594



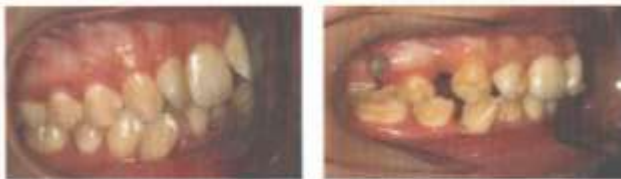
Our Cases



EXTRACTION CASE WITHOUT FORCE PROTOCOLS



EXTRACTION CASE WITH FORCE PROTOCOLS



Precise root control through accurate force delivery is at the heart of WhitemilClear's aligner system.

More than ever, we're trusted to deliver great treatment solutions for your patients. There is a wide range, including extraction cases, of applications for the innovative.

WhitemilClear ALIGNER

Extending the range of Clear Aligner Therapy

Step1: Consultation & Planning

A scan, impression and bite registration are taken of the Maxillary and Mandibular arch. Cone Beam Computed Tomography superimposition is possible where instructed. Our technicians will present a treatment movement plan to the doctor with reference to radiographic records (OPG & Lateral Cephalo) and photos taken.

Step2: Fabrication

Computer-controlled production of the aligners takes place in the lab with an attachment template where necessary. Approximate turns around time -3 weeks from receiving the scan or impressions.

Step3: Refinement

Our unique plan includes refinement at no additional charge for 36 months

Step4: Retention

Whitemil retainers are provided in an additional order, with 1 free replacement during a 12 months period.

Your advantages at a glance

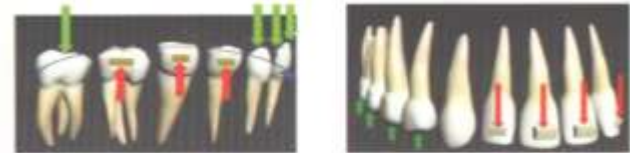
Precise force delivery to provide accurate treatment results

Individualized force delivery system for teeth:



Virtual reverse curve of spee to deliver reliable deep bite control(left).

Posterior intrusion to deliver bite deepening effects for open bite(right).



Extraction protocols: Precise force protocols prevents bite deepening, excessive mesial tip of posterior teeth during space closure.

